

## It's time to think unique.

Not all gel implants are shaped equally. The *Natrelle*® 410 is specifically engineered to mirror a woman's real curves. It's also designed to hold its shape, thanks to a new advancement in silicone gel technology—highly cohesive gel.<sup>3</sup>

What does this mean for you? For one, an implant with a low rippling rate (0.7%)\* that maintains its original shape and fullness over time.<sup>3</sup> And that's just the beginning.

\*In primary augmentation patients at 7 years.

# Less than 1%

wrinkling/rippling through 7 years in primary augmentation patients<sup>3</sup>

## Take a look—side by side.



*Natrelle*® 410 Shaped Gel

Other Shaped Gel

The *Natrelle*® 410 features a truly anatomically shaped profile designed to maintain its shape over time

In vivo significance has not been established.

### Important *Natrelle*® Breast Implants Safety Information (continued)

#### Precautions (continued)

- Clinical diagnosis of depression or other mental health disorders, including body dysmorphic disorder and eating disorders. Please discuss any history of mental health disorders with your surgeon prior to surgery. Patients with a diagnosis of depression, or other mental health disorders, should wait for resolution or stabilization of these conditions prior to undergoing breast implantation surgery

#### Adverse events

The most commonly reported adverse events for *Natrelle*® 410 Highly Cohesive Anatomically Shaped Silicone-Filled Breast Implants are: reoperation, implant removal (with or without replacement), implant rupture, and Baker grade III/IV capsular contracture.

## Designed for a shape that holds and the natural feel you desire.

We know that the feel of your implants is just as important as the shape. That's why the *Natrelle*® 410 was also created to feel soft to the touch. Our highly cohesive gel was designed to give you the look—and natural feel—you desire.

## Satisfaction that lasts.

The *Natrelle*® 410 has 96.5% satisfaction at 7 years in primary augmentation patients.<sup>3</sup> And it's easy to see why.

Our highly cohesive gel is engineered to hold its shape over time, so it resists rippling, stays in place, and has no observed extracapsular gel migration in ruptured implants through 7 years.<sup>3</sup> The *Natrelle*® 410—the look, feel, and safety you want.

# 96.5% satisfaction rate

at 7 years in primary augmentation patients<sup>3</sup>

The *Natrelle*® 410 is designed for long-lasting satisfaction.



Actual *Natrelle*® 410 patient at preoperation, 1, 3, and 7 years

### Important *Natrelle*® Breast Implants Safety Information (continued)

#### Adverse events (continued)

Other potential complications for *Natrelle*® 410 Highly Cohesive Anatomically Shaped Silicone-Filled Breast Implants include: swelling, implant malposition, pain, ptosis, infection, changes in breast sensation, nipple complications, seroma, delayed wound healing, hematoma, scarring, asymmetry, wrinkling/rippling, extrusion, implant palpability/visibility, and upper pole fullness.

The most commonly reported adverse events for *Natrelle*® Silicone-Filled Breast Implants are: reoperation, implant removal (with or without replacement), Baker grade III/IV capsular contracture, implant malposition, and asymmetry.

Other potential complications for *Natrelle*® Silicone-Filled Breast Implants include: unsatisfactory results, pain, changes in nipple and breast sensation, infection, hematoma/seroma, difficulties breastfeeding, calcium deposits in the tissue around the implant, extrusion, necrosis, delayed wound healing, breast tissue atrophy/chest wall deformity, and lymphadenopathy.

**Important:** For full safety information please visit [www.natrelle.com](http://www.natrelle.com) or call Allergan Product Support at 1-800-433-8871.

**Caution:** *Natrelle*® Breast Implants are available by prescription only.

## The shaped implant selected 2 to 1 by patients

Don't just choose any shaped implant—choose the leading shaped implant. The *Natrelle*® 410 has 20 years of favorable results in Europe.<sup>4,5</sup> Plus, it has the natural feel selected by patients 2 to 1. When asked which breast implant outside the body felt “most natural,” twice as many women selected *Natrelle*® 410 vs the other shaped implant.<sup>7,1</sup>

<sup>1</sup>**Methodology** Survey and in-person interviews conducted with 52 prospective mastopexy augmentation patients in May 2012. Subjects were asked which shaped breast implant ex vivo felt “most natural”.

## Is the *Natrelle*® 410 right for you?

Choosing the correct implant is an individual decision and depends on a number of important factors. Talk to your doctor about whether the *Natrelle*® 410 is the right choice for your body type, breast tissue, and personal preferences. *Natrelle*® offers you a wide selection of implant options—both round and shaped—so you can meet your unique goals.

## The *Natrelle*® 410 ConfidencePlus® Warranty.

*Natrelle*® has the confidence to offer you one of the best warranty programs in the industry. When you choose the *Natrelle*® 410, you will automatically be enrolled in our *ConfidencePlus*® Premier warranty program and enjoy:

- *ConfidencePlus*® Premier coverage with *Natrelle*® Gel at no extra charge
- Lifetime product replacement
- Financial assistance up to \$3500 in the event of implant rupture for *Natrelle*® Gel for 10 years
- Free contralateral implant replacement with *Natrelle*® Gel

### An exclusive bonus

If you and your surgeon choose the *Natrelle*® 410, you and one of your friends are eligible to get a second Allergan treatment...free!<sup>2</sup>



<sup>2</sup>For qualified augmentation patients only; only a physician can determine who is an appropriate patient for these products.

#### References

1. Summary Basis of Decision (SBD) for *Natrelle*® Highly Cohesive Silicone-Filled Breast Implants. Health Canada website. Application no. 88573. [http://www.hc-sc.gc.ca/dhp-mpps/prodpharma/sbd-smd/mc-im/sbd\\_smd\\_2012\\_natrellecohesive\\_88573-eng.php](http://www.hc-sc.gc.ca/dhp-mpps/prodpharma/sbd-smd/mc-im/sbd_smd_2012_natrellecohesive_88573-eng.php). Issued September 25, 2012. Accessed December 11, 2012.
2. Summary Basis of Decision (SBD) for shaped implants. Health Canada website. Application no. 86150. Issued September 8, 2012. Accessed December 11, 2012.
3. *Natrelle*® 410 Highly Cohesive Anatomically Shaped Silicone-Filled Breast Implants Directions for Use, 2013.
4. Maxwell GP, Van Natta BW, Murphy DK, Slicton A, Bengtson BP. *Natrelle*® style 410 form-stable silicone breast implants: core study results at 6 years. *Aesthetic Surg J*. 2012;32(6):709-717.
5. Spear SL, Murphy DK, Slicton A, Walker PS, for the Inamed Silicone Breast Implant US Study Group. Inamed Silicone Breast Implant Core Study results at 6 years. *Plast Reconstr Surg*. 2007;120(suppl 1):8S-16S.
6. Hedén P, Bronz G, Elberg JJ, et al. Long-term safety and effectiveness of style 410 highly cohesive silicone breast implants. *Aesthetic Plast Surg*. 2009;33(3):430-436.
7. Data on file, Allergan, Inc., May 29, 2012; Assessment of Shaped Implants from Allergan and Sientra: Results for Prospective Breast Augmentation Patients. Topline - Assessment of Shaped Implants.pptx.



©2013 Allergan, Inc. ®marks owned by Allergan, Inc. [www.natrelle.com](http://www.natrelle.com) APC21GJ13 130347

Jessica |  
*Natrelle*® 410 Style FM



# Keep them guessing.

Finally, a new alternative to round implants that's more true to the shape of a woman's breast.

## Introducing the *Natrelle*® 410 Shaped Gel Breast Implants

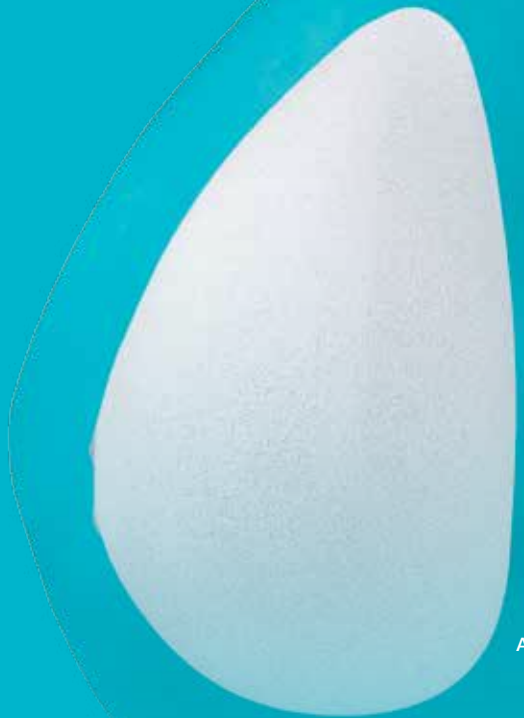
A new breast implant designed with a shape that mirrors a woman's real curves.

# New *Natrelle*® 410 SHAPED GEL

Highly Cohesive Anatomically Shaped Silicone-Filled Breast Implants

Please see inside for Important Safety Information.

Natrelle®



The Natrelle® 410 Highly Cohesive Anatomically Shaped Silicone-Filled Breast Implant

## Introducing The Natrelle® 410.

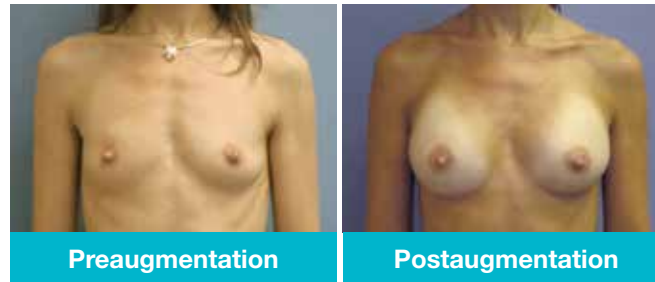
The safety—and look—you've been waiting for.

If you are considering breast augmentation, now you and your surgeon can choose from either a round or anatomically shaped profile. Because now the #1 surgeon-selected shaped gel implant in Europe and Canada is available to you.<sup>1,2</sup> It's called the Natrelle® 410.

And it's designed with a shape that mirrors the curves of a woman's breast, along with lasting satisfaction.

### A new breast implant designed with a shape that mirrors a woman's real curves.

The Natrelle® 410 features an anatomical shape, with contours that closely resemble the curve of a woman's breast.<sup>3</sup> If the "round" look isn't exactly what you're looking for, ask your doctor about the Natrelle® 410, now available in the United States.



Actual primary augmentation Natrelle® 410 patient

### Round vs shaped—the difference is clear.



Natrelle® 410 Shaped Gel\*



Natrelle® Round Silicone-Filled Breast Implant\*

\*Simulated images. Images are for illustration purposes only. Actual results may vary.

#### Important Natrelle® Breast Implants Safety Information

##### Indication

**Breast augmentation for women at least 22 years old.** Breast augmentation includes primary breast augmentation to increase the breast size, as well as revision surgery to correct or improve the result of a primary breast augmentation surgery.

### Proven safety—2 ways.

#### 1. This gel is designed to stay in place.

The Natrelle® 410 uses a highly cohesive gel filler that holds together uniformly and stays in place.<sup>3</sup>

The Natrelle® 410 has no observed extracapsular gel migration in ruptured implants through 7 years.<sup>3</sup>

#### 2. This implant has a lower capsular contracture rate.

The Natrelle® 410 has a 69% lower capsular contracture rate vs Natrelle® Round Silicone-Filled Breast Implants.<sup>4,5†</sup>

This is reassuring since capsular contracture—a tightening of scar tissue that causes the breast to harden—is one of the primary causes of reoperation.<sup>3</sup>

**†Methodology** Data reported in 2 studies: an ongoing, prospective, 10-year, multicenter study (N = 492) of the Natrelle® 410 Shaped Gel; and a prospective, 10-year, multicenter study (N = 455) of Natrelle® Round Silicone-Filled Implants. The 6-year risk rate for Natrelle® 410 Shaped Gel was 4.6% (95% CI: 3.0%-7.1%) compared with 14.8% (95% CI: 11.7%-18.5%) for Natrelle® Round Silicone-Filled Implants.



The implant may react differently if the shell is breached while implanted.

#### Important Natrelle® Breast Implants Safety Information (continued)

##### Contraindications

Breast implant surgery should NOT be performed in:

- Women with active infection anywhere in their body
- Women with existing cancer or pre-cancer of their breast who have not received adequate treatment for those conditions
- Women who are currently pregnant or nursing

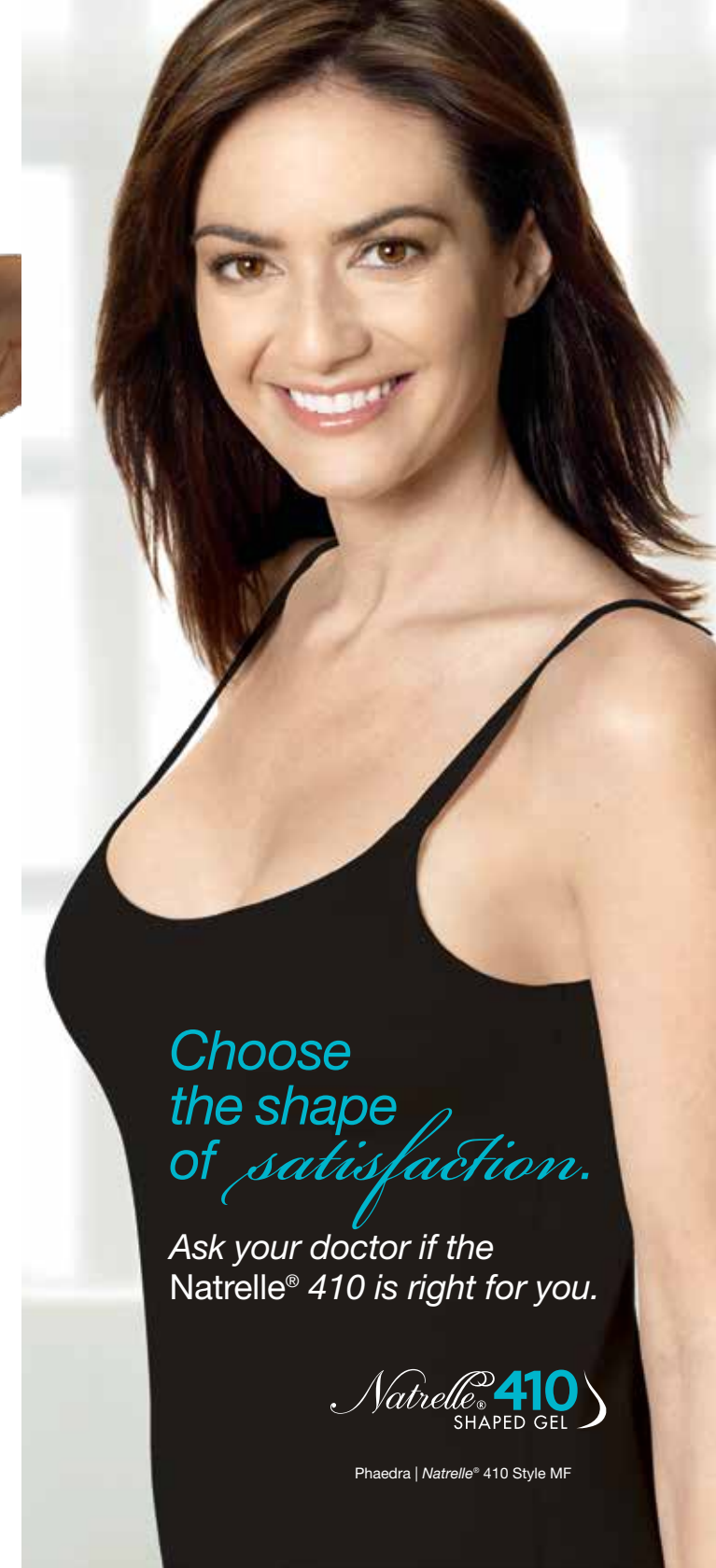
##### Warnings

- Many of the changes to breasts following implantation cannot be undone, and if the implants are removed without replacement, dimpling, wrinkling, or puckering may be experienced
- Breast implants are not lifetime devices, and additional unplanned surgeries will likely be necessary
- In order to screen for silent rupture, regular MRI screenings are recommended

##### Precautions

Safety and effectiveness have not been established in patients with the following:

- Autoimmune diseases (for example, lupus and scleroderma)
- A weakened immune system (for example, currently taking drugs that weaken the body's natural resistance to disease)
- Planned chemotherapy following breast implant placement
- Planned radiation therapy to the breast following breast implant placement
- Conditions that interfere with wound healing and blood clotting
- Reduced blood supply to breast tissue



Choose the shape of satisfaction.

Ask your doctor if the Natrelle® 410 is right for you.

Natrelle® 410 SHAPED GEL

Phaedra | Natrelle® 410 Style MF