

**CHRISTINE PETTI, MD, FACS**

3400 West Lomita Boulevard,  
 Suite 305, Torrance

310-539-5888

dr-petti.com

facebook.com/drpetti

**SERVICES OFFERED**

Breast Augmentation  
 Redo Breast Implant Surgery  
 Smartlipo™ Liposuction  
 Face-Neck-Eyelid Lifts

SculpSure™ 25-minute  
 Fat Reduction  
 Abdominoplasty  
 Botox™

Juvederm™  
 Radiesse™  
 Restylane™  
 Sculptra™

**Q&A**

**HOW DO YOU ENCOURAGE YOUR PATIENTS AND EMPLOYEES TO MAINTAIN THEIR OWN HEALTH AND WELL-BEING?**

"I encourage my patients and employees to live a simple life of healthy eating, exercise and mental strength. My philosophy is to strive to create beauty that is both internal and external."

**WHAT WOULD YOU LIKE POTENTIAL PATIENTS TO KNOW ABOUT YOU?**

"I want potential patients to know that I listen and I care. I want them to know that I love beauty and have a vision for what I create in each and every patient. I customize each surgery to the individual. I want them to know

that I work hard to be the best plastic surgeon. I never stop learning, as I always have scientific studies, clinical presentations and countless professional obligations to fulfill, which keep me contemporary and revitalized."

**HOW DO YOU GIVE BACK TO YOUR COMMUNITY?**

"This year I have had the privilege of donating hundreds of aesthetic services to fundraisers across the South Bay. I have lectured to cancer support groups, and I offered an internship to a plastic and reconstructive surgeon visiting from Osaka, Japan. I have high school interns from Chadwick and Peninsula high schools. I love teaching and giving back. It fills my days with joy and vigor!"

**SHARED TIP**



SculpSure™ is our new 25-minute, light-based, noninvasive, laser permanent fat reduction procedure that treats stubborn fat in the abs, waistline, love handles, thighs and other problem areas. I introduced this procedure on *The Doctors* TV program in May. SculpSure™ is comfortable and great for men and women who are busy and want no down time. It is perfect for those of us who are not overweight but are frustrated by the belly pooch and muffin top from childbearing that remains despite diet, exercise, weight training and countless prayers! As a mother of two, I can relate and love SculpSure™!

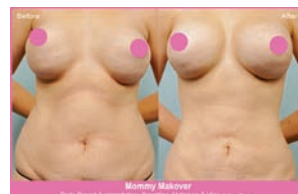
“I love beauty and have a vision for what I create in each and every patient.”

**OFF THE CLOCK WITH DR. PETTI**



Each year we attend the Indian Wells Open Tennis Tournament. We always meet interesting people and love the international flavor of the event. Long, sunny, dry days and amazing hikes are always the pinnacle of our cherished "off" time there!

**BEFORE & AFTER**



31-year old multiparous female, 5'2", 138 pounds, 34D bra size requested removal of hard, distorted, subpectoral saline breast implants and Smartlipo of abdomen, hips and mons pubis. Breast implants were revised and replaced. The breast pocket was completely remodeled to correct the distorted implants. Postoperative photos are one year after surgery.

